

MICHELIN SCORCHER SPORT



THE TIRE FOR HARLEY-DAVIDSON®'S NEW HIGH-PERFORMANCE MOTORCYCLES



PERFORMANCE IN WET AND DRY

The most advanced MICHELIN 2CT Technology and MICHELIN 2CT+ Technology ever used in MICHELIN Scorchers tires provide excellent levels of wet and dry grip with wear resistance in the center of the tread and optimized grip on the shoulders.



DESIGNED FOR HANDLING PERFORMANCE

Tuned MICHELIN Radial-X casing for maximum handling performance from Harley-Davidson®'s high performance motorcycles.

ORIGINAL EQUIPMENT
HARLEY DAVIDSON: LIVEWIRE ONE

MICHELIN PREMIUM TOUCH DESIGN



MICHELIN SILICA TECHNOLOGY



MICHELIN ARAMID SHIELD TECHNOLOGY



MICHELIN RADIAL-X TECHNOLOGY



MICHELIN 2CT+ TECHNOLOGY



Size	TL/TT	CAI
120/70 ZR 17 M/C (58W)	TL	475979

Size	TL/TT	CAI
180/55 ZR 17 M/C (73W)	TL	617337

MICHELIN SCORCHER 11



THE ORIGINAL EQUIPMENT MICHELIN TIRE FOR OPTIMAL HANDLING AND OUTSTANDING GRIP ON HARLEY-DAVIDSON® CRUISER MOTORCYCLES



DESIGNED FOR EXCELLENT GRIP

Semi-slick tread pattern for excellent adhesion on dry roads. Optimized tread groove design for dependable wet grip.

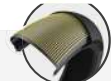


PRECISE HANDLING

The latest generation of MICHELIN radial technology allows for easy maneuverability and impressive agility.

ORIGINAL EQUIPMENT
HARLEY DAVIDSON: BREAKOUT 114 (FXBRS), FAT BOY 114 (FLFBS), FXDR 114, SPORTSTER SUPERLOW, STREET 500 & 750

MICHELIN ARAMID SHIELD TECHNOLOGY



MICHELIN RADIAL-X TECHNOLOGY



Size	TL/TT	CAI
100/80 - 17 M/C 52H	TL	420386
140/75 R 17 M/C 67V	TL	567465
120/70 ZR 18 M/C (59W)	TL	718570
120/70 ZR 18 M/C (59W)	TL	716063
160/60 R 18 M/C 70V	TL	397891
120/70 ZR 19 M/C 60W	TL/TT	054571
130/60 B 21 M/C 63H	TL	471253

Size	TL/TT	CAI
140/75 R 15 M/C 65H	TL	232516
150/60 ZR 17 M/C (66W)	TL	559849
150/70 ZR 17 M/C (69W)	TL	393291
180/55 R 17 M/C (73W)	TL	206030
200/55 R 17 M/C 78V	TL	627088
240/40 R 18 M/C 79V	TL	897924

MICHELIN SCORCHER 21



THE CRUISER LOOK WITH AGILITY AND WET GRIP FOR THE HARLEY-DAVIDSON STREET ROD™ MODEL



BUILT FOR EXCELLENT GRIP ON WET SURFACES

MICHELIN Silica Technology. The mix of silica-rich rubber compounds provide excellent grip on wet surfaces.

ORIGINAL EQUIPMENT
HARLEY DAVIDSON: STREET ROD™



Size	TL/TT	CAI
120/70 R 17 M/C 58V	TL	163575

Size	TL/TT	CAI
160/60 R 17 M/C 69V	TL	624733

MICHELIN SCORCHER 31



THE ORIGINAL EQUIPMENT MICHELIN TIRE FOR PERFORMANCE AND EVEN TREAD WEAR



CRUISE WITH CONFIDENCE

Know-how from Michelin's decades of road experience, provides good grip on both wet and dry roads.



DESIGNED FOR COMFORT AND HANDLING

A supple casing design and an adapted profile promote nimble handling on winding roads.

ORIGINAL EQUIPMENT
HARLEY DAVIDSON: FORTY-EIGHT (XL1 1200X), IRON 1200, IRON 883 (XL 883 N), LOW RIDER S (FXLRS), LOW RIDER ST (FXLRST), SPORT GLIDE, SPORTSTER 1200 CUSTOM



Size	TL/TT	CAI	Tube
130/90 B 16 M/C 73H REINF	TL/TT	359328	16MI
130/80 B 17 M/C 65H	TL/TT	682482	17MH
130/70 B 18 M/C 63H	TL/TT	559098	18MG
100/90 B 19 M/C 57H	TL/TT	986404	19MF HD
110/90 B 19 M/C 62H	TL	569118	
130/60 B 19 M/C 61H	TL/TT	605796	19MF
80/90 - 21 M/C 54H REINF	TL/TT	705949	21MD

Size	TL/TT	CAI	Tube
150/80 B 16 M/C 77H REINF	TL/TT	193056	16MI2
180/65 B 16 M/C 81H REINF	TL/TT	781067	
180/70 B 16 M/C 77H	TL	718252	
160/70 B 17 M/C 73V	TL/TT	825755	17MI
180/60 B 17 M/C 75V	TL/TT	460388	17MI