

MICHELIN ROAD 6



THE NEW MUST-HAVE MICHELIN ROAD TIRE



THE NEW VERSION OF THE ACCLAIMED MICHELIN ROAD TIRE⁽¹⁾
The MICHELIN Road 6 benefits from 2 decades of constant innovation and the highest levels of expertise.



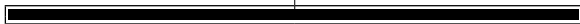
MORE WET GRIP!
+15% more grip than MICHELIN Road 5⁽²⁾ in wet conditions thanks to 100% Silica Technology and a brand new tread pattern.



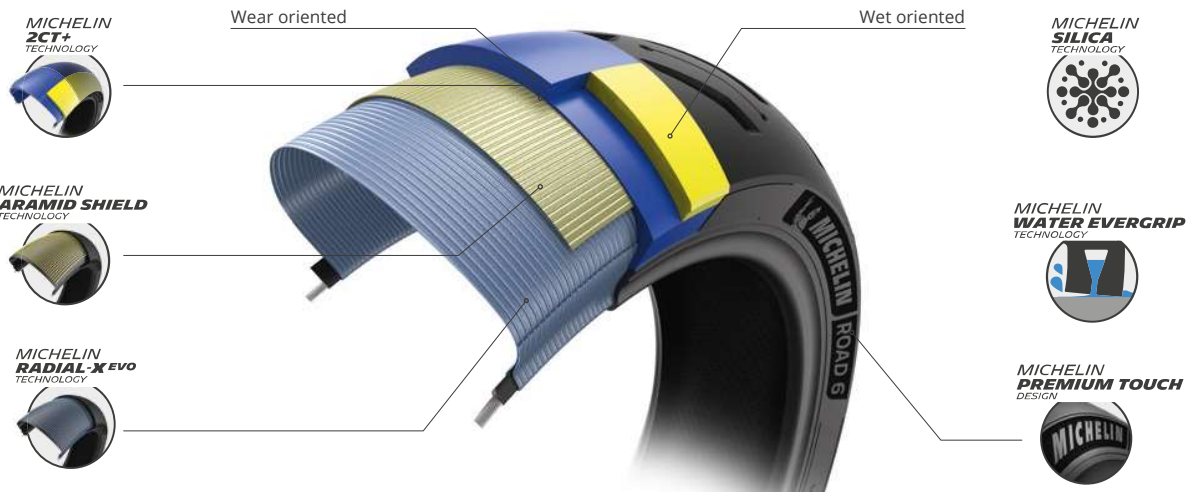
RIDE FOR LONGER!
The new high tech compound increases the longevity of the tire by 10%⁽³⁾.

URBAN

ROAD



ORIGINAL EQUIPMENT
HONDA: CB500F/ CBR500R

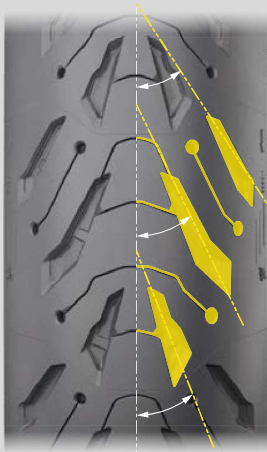


Size	TL/TT	CAI
110/70 ZR 17 M/C 54W	TL	618469
120/60 ZR 17 M/C (55W)	TL	009349
120/70 ZR 17 M/C (58W)	TL	830256
120/70 ZR 18 M/C (59W)	TL	411606
110/80 ZR 19 M/C (59W)	TL	055466
120/70 ZR 19 M/C (60W)	TL	749529

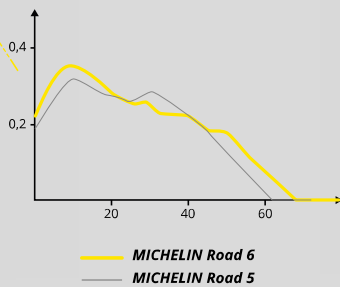
Size	TL/TT	CAI
140/70 ZR 17 M/C 66W	TL	782021
150/60 ZR 17 M/C 66W	TL	818332
150/70 ZR 17 M/C (69W)	TL	313146
160/60 ZR 17 M/C (69W)	TL	834270
170/60 ZR 17 M/C (72W)	TL	774473
180/55 ZR 17 M/C (73W)	TL	159304
190/50 ZR 17 M/C (73W)	TL	599184
190/55 ZR 17 M/C (75W)	TL	579939

New grooves and sipes angles for a better transversal grip

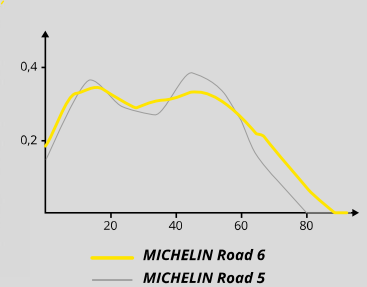
A constant void ratio whatever the line angle to insure a constant water evacuation.



Grooving rate as a function of the curvilinear abscissa



Grooving rate as a function of the curvilinear abscissa



Long lasting performance

MICHELIN WATER EVERGRIP TECHNOLOGY

3D sipes technology, to ensure a constant water evacuation whatever worn tire.



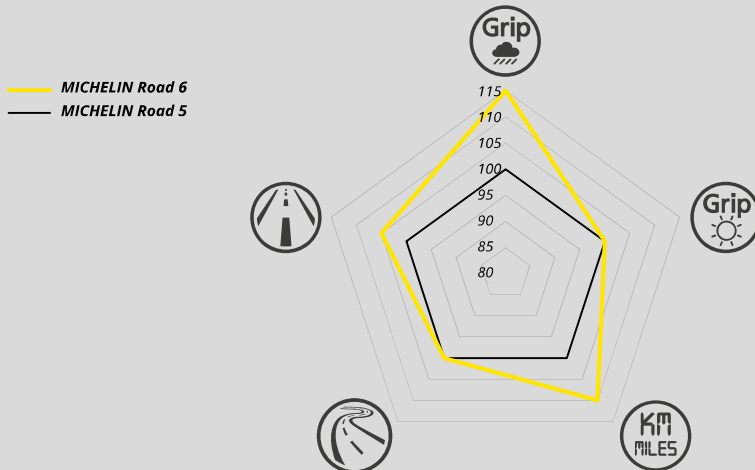
New tire

Wear over kilometers



Worn tire

MICHELIN Road 6 versus MICHELIN Road 5



(1) Recommended by 91% of MICHELIN Road 5 users. Verified Reviews, December 2020 - June 2021»

(2) In-house comparisons of the MICHELIN Road 6 tires and MICHELIN Road 5 tires ranges conducted at Fontange track: the 07-08/07/2020, dimensions of the tires: 120/70 ZR 17 and 180/55 ZR 17, on a Suzuki 1250S Bandit and a Triumph Street Triple 5 765; the 15/03/2021 and 21/05/2021, dimensions of the tires: 120/70 ZR 17 and 180/55 ZR 17, on a Suzuki 1250S Bandit.

(3) According to an independent test on open-road made by DEKRA Narbonne: 20/07/2020 to 07/08/2020, dimensions of the tires: 120/70 ZR 17 et 180/55 ZR 17 MICHELIN ROAD 6 tires, on a BMW K1300R. 28/09/2020 to 12/11/2020, dimensions of the tires: 120/70 ZR 17 et 160/60 ZR 17 MICHELIN ROAD 6 tires, Moto: Suzuki Gladius 650.

According to MOTORRAD Magazine 07/2023, MICHELIN Road 6 is awarded by the daily life/tour purchase tip at the test including BRIDGESTONE S 22, CONTINENTAL ContiMotion Z/M, CST CM-615/616, DUNLOP GPR-300, METZELER M9 RR and MICHELIN Road 6. This test was conducted with the dimensions: 110/70 R 17 (front) and 150/60 R 17 (rear) on a KTM 390 Duke. The test has been conducted at the Bridgestone wet test track in Nettuno. The MICHELIN Road 6 came first on dry in maneuverability, in stability and grip in curves and in feedback. On wet, it came first in maneuverability, grip in curves and acceleration and in feedback. According to MOTORRAD Magazine 06/2023, MICHELIN Road 6 is awarded by a very good mention at the dual test including DUNLOP Roadsmart IV, and MICHELIN Road 6. This test was conducted with the dimensions: 120/70 R 19 (front) and 170/60 R 17 (rear) on a BMW R 1250 GS. The test has been conducted at the Bridgestone wet test track in Nettuno and on French and Spanish country roads. The MICHELIN Road 6 came first on dry maneuverability. On wet, it has the best grip in curves and feedback.