

# MICHELIN

## COMMANDER III CRUISER



## WET GRIP, LONGEVITY AND HANDLING PERFORMANCE FOR YOUR CRUISER BIKE



### THE BEST IN ITS CATEGORY ON WET SURFACES<sup>(1)</sup>

Exceptional wet grip<sup>(1)</sup>, due to a compound mix incorporating MICHELIN Silica Technology combined with a void ratio 3% higher than that of the MICHELIN Commander II front tire<sup>(1)</sup>.



### EXCELLENT LONGEVITY

Longevity continued from the MICHELIN Commander II tire with a new profile improving the contact patch.



### EXCELLENT HANDLING

MICHELIN Aramid Shield Technology combined with its new profile give the MICHELIN Commander III Cruiser tire enhanced handling when cornering, exceeding that of the MICHELIN Commander II tire<sup>(1)</sup>.

### ORIGINAL EQUIPMENT

BMW: R NINE-T BOBBER

URBAN

ROAD

### Can the MICHELIN Commander III be mixed with other tires ?

To ensure the best level of performance and safety, our ranges are developed based on a uniform fitting to the front and the rear. It is therefore recommended that different ranges are not mixed on the same motorcycle.

### Is there a specific load recommendation for MICHELIN Commander III?

Michelin advice to respect maximum load recommended by bike manufacturer



(1) According to Motorrad magazine 06/20. MICHELIN Commander III Cruiser came top in the test when up against the Metzeler Cruisetec, Bridgestone Battlecruise H50, Continental ContiTour, Mistas Custom Force, Pirelli Night Dragon GT and Dunlop D401, with front dimensions 130/90 B16 and rear dimensions 150/80 B16 and an Harley-Davidson FLHCS Heritage Classic 114. Test conducted at the Bridgestone test facility in Nettuno, near Rome. The MICHELIN Commander III Cruiser came first in its category on 3 specific criteria on a wet surface: greatest lean angle, shortest braking distance and best lap time!

MICHELIN  
PREMIUM TOUCH  
DESIGN



MICHELIN  
SILICA  
TECHNOLOGY



MICHELIN  
ARAMID SHIELD  
TECHNOLOGY

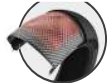


MICHELIN  
RADIAL-X  
TECHNOLOGY



OR

MICHELIN  
BIAS BELTED  
TECHNOLOGY



OR

MICHELIN  
BIAS  
TECHNOLOGY



Size	TL/TT	CAI	Tube
130/90 B 16 M/C 73H REINF	TL/TT	205341	16MI TALC HD / 16MI 2171 / 16MI2 TALC HD / 16MI2
140/75 R 17 M/C 67V	TL	488163	
100/90 B 19 M/C 57H	TL/TT	469040	19MF RED HD / 19MF / 19MF HD TALC
110/90 B 19 M/C 62H	TL/TT	077968	19MF RED HD / 19MF / 19MF HD TALC
80/90 - 21 M/C 54H REINF	TL/TT	087823	21MD / 21MD HD TALC
90/90 - 21 M/C 54H	TL/TT	838241	



Size	TL/TT	CAI	Tube
140/90 B 15 M/C 76H REINF	TL/TT	330228	15MJ
150/90 B 15 M/C 74H	TL/TT	821706	15MJ
170/80 B 15 M/C 77H	TL/TT	307669	15MJ
180/70 B 15 M/C 76H	TL/TT	999381	15MJ
130/90 B 16 M/C 73H REINF	TL/TT	234596	16MI TALC HD / 16MI 2171 / 16MI2 TALC HD / 16MI2
140/90 B 16 M/C 77H REINF	TL/TT	698455	16MI TALC HD / 16MI 2171 / 16MI2 TALC HD / 16MI2
150/80 B 16 M/C 77H REINF	TL/TT	797694	16MI TALC HD / 16MI 2171 / 16MI2 TALC HD / 16MI2
160/70 B 17 M/C 73V	TL/TT	497307	17MI
200/55 R 17 M/C 78V	TL	292667	